

# **Lil' Piggie Instruction & Pattern:**

9 Pattern Pieces

1. EAR
2. PIG TAIL
3. SNOUT -- FABRIC
4. SNOUT DISK -- PLASTIC
5. BOTTOM FRONT
6. BOTTOM REAR
7. TOP (A & B) tape together
8. BOTTOM MIDDLE -- BELLY
9. EYE (optional – use ½ inch buttons or embroider)

# Lil' Piggie Instructions

45-inch-wide fabric or ½ yard 36-inch-wide fabric, scrap of plastic (coffee can lid or something similar), scrap of black felt, polyester fiberfill.

**Finished size:** 10 inches long.

## **DIRECTIONS**

1. Cut out all pieces; mark eye and ear placement on right side of top. Mark dots on seam line on wrong side of side pieces, reversing one side.

2. For ears, cut two squares 3½ by 3½ inches. Fold square in half to form a rectangle. Fold each corner of folded edge diagonally to center; fold in half to form a triangle with raw edges along one side. Press. Baste raw edges of ear triangles to seam allowance of top piece with open folded edges toward snout and raw edges meeting.

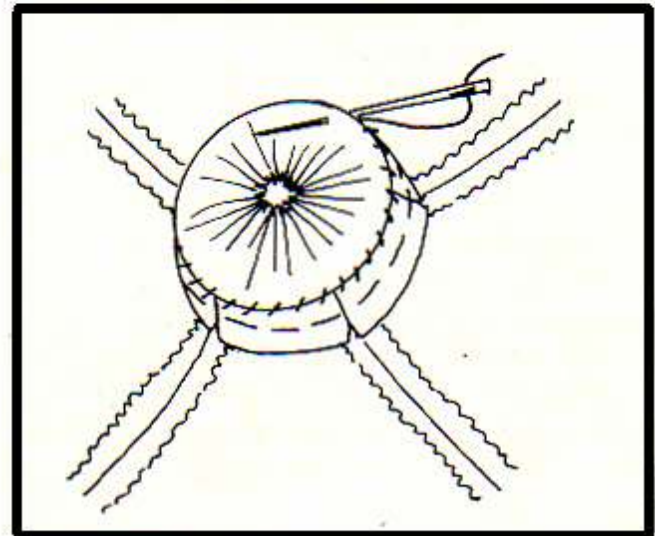
3. Sew unmarked edge of side pieces to top from snout end to tail end, leaving snout end open.

4. Sew legs of bottom front to legs of bottom middle, stitching from A to B. Sew legs of bottom rear to legs of bottom middle, stitching from C to D.

5. Sew assembled bottom section to sides, matching dots on sides to seams on bottom. Leave 3 inches open between legs on one side for turning and stuffing. Clip seam allowance at corners of legs.

6. Clip seam allowances in curved area near snout end. Finger press seams open on tube shape of snout end. Fold right side of snout end back ½ inch and baste in place. Make gathering stitch around fabric snout circle, draw up tightly over plastic disc and secure gathering thread.

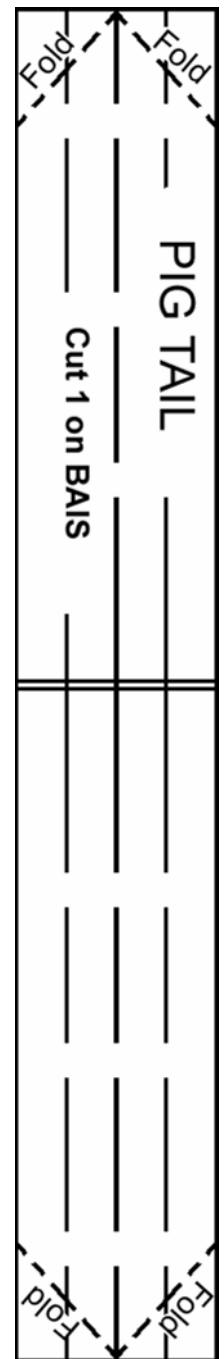
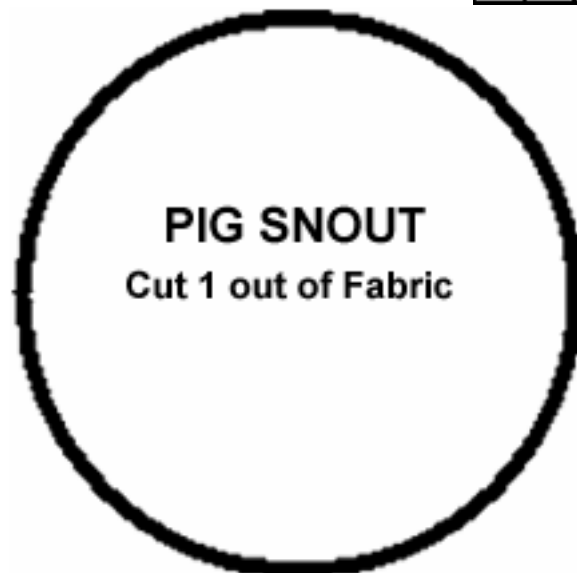
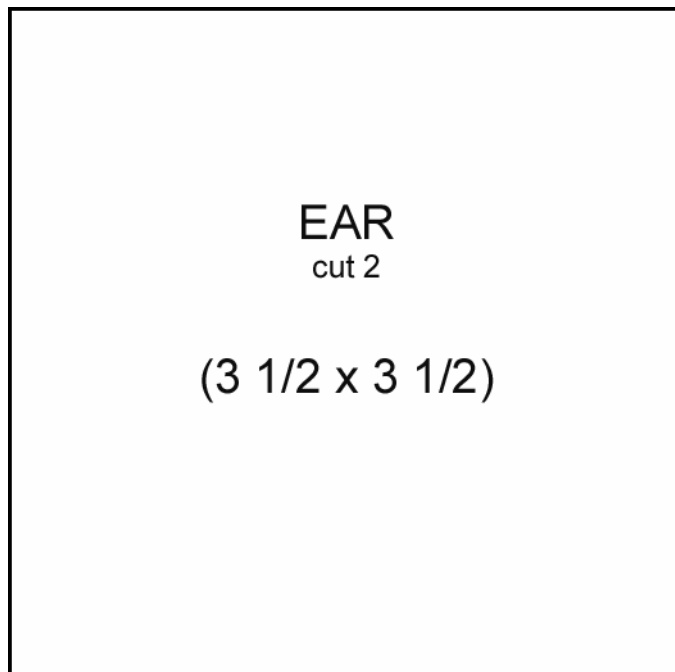
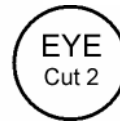
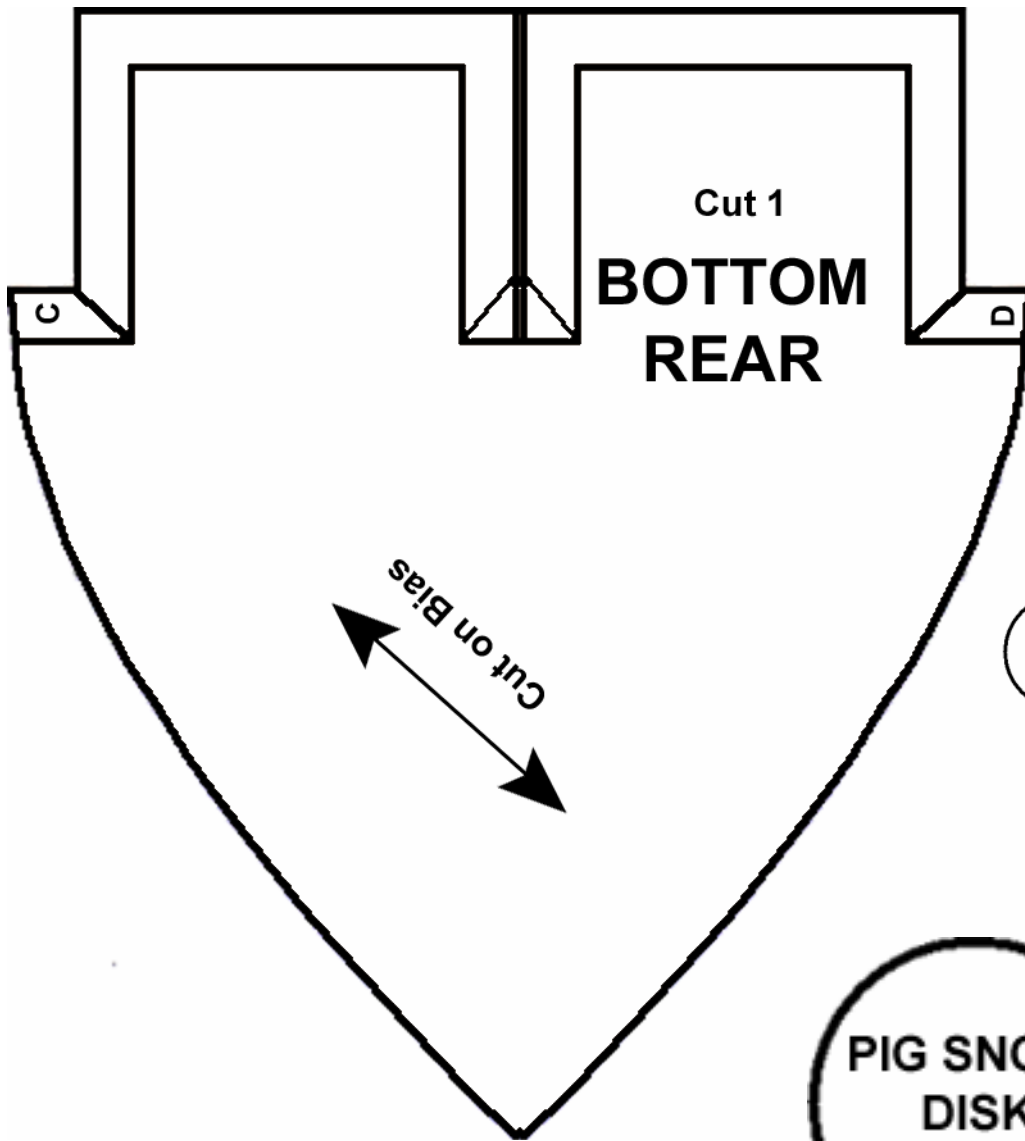
7. Whipstitch folded edge of snout end to edge of fabric covering on disc. (See illustration.)

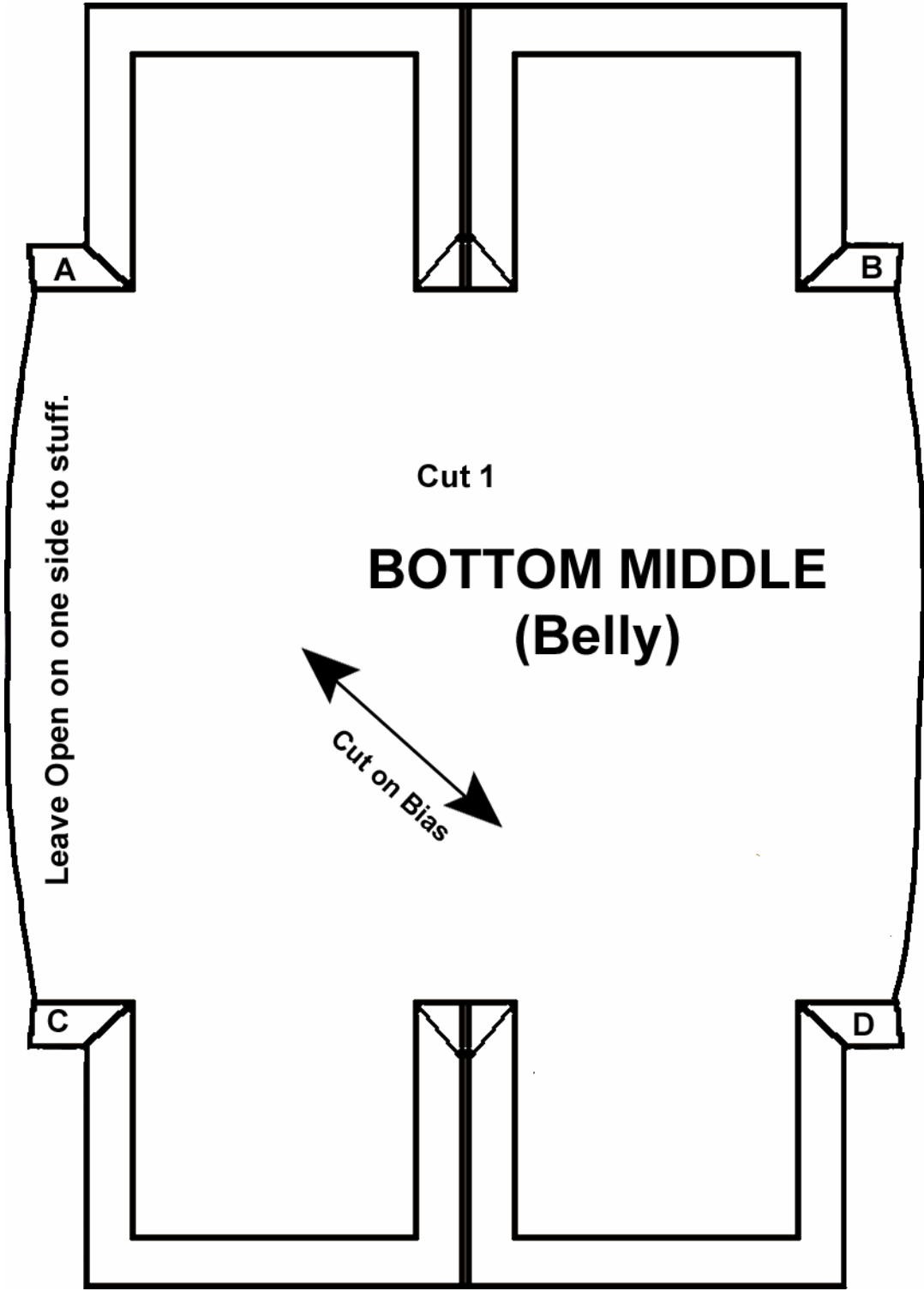


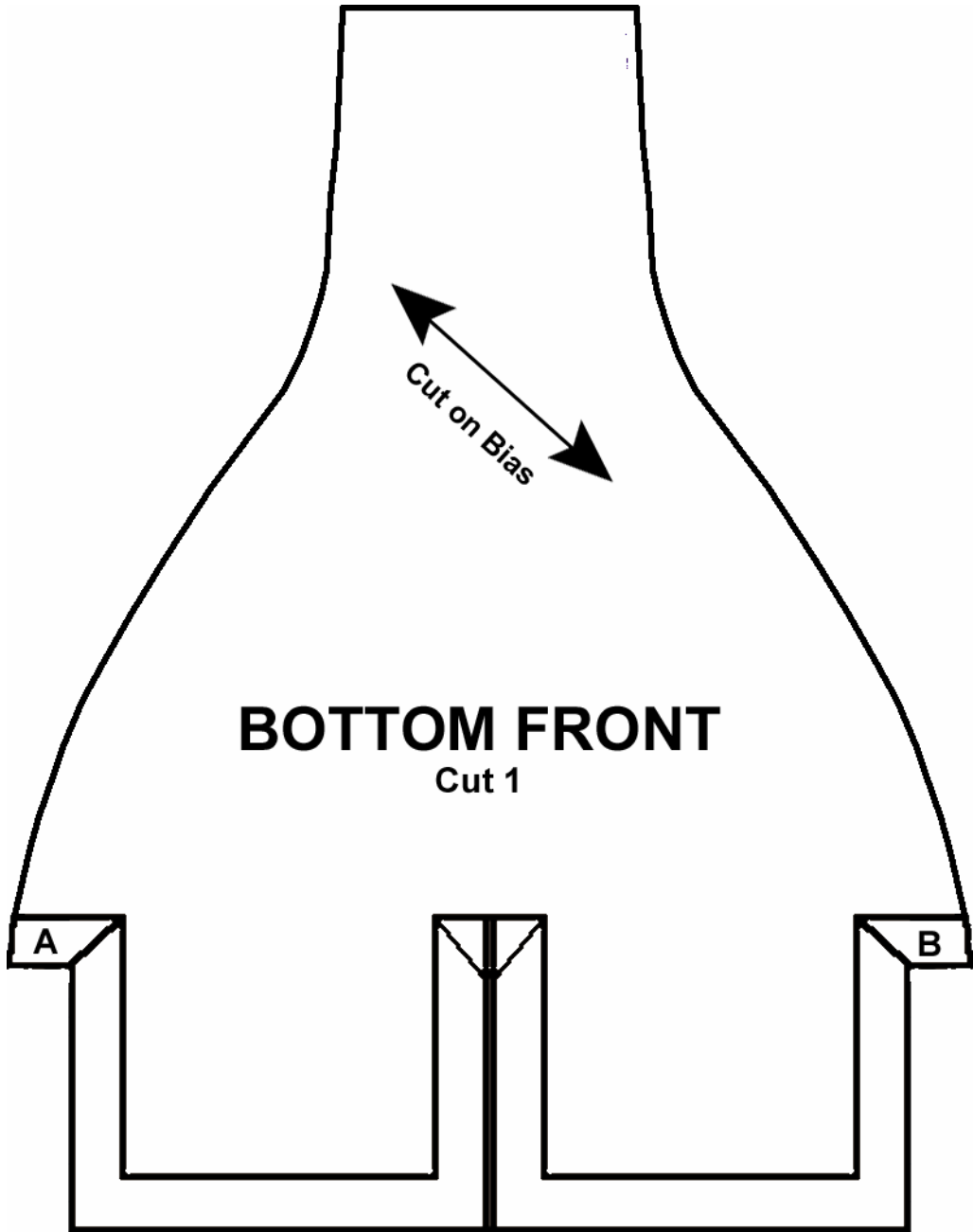
Remove basting, turn, and stuff firmly with fiberfill. Slip stitch opening closed.

8. Fold corners at one end of tail diagonally to center and press. Press tail in half lengthwise; fold raw edges in to center fold and press. With long machine stitch, sew folded edges together. Secure threads at tapered end of tail. Pull bobbin thread at other end until tail forms a spiral. Sew raw-edge end of tail by hand to rear of pig where four seams meet. Tack first loop of spiral to cover raw-edge end.

9. Sew eyes in place by hand with black thread.







Cut on Bias

**BOTTOM FRONT**

Cut 1

A

B

