

### E or 6<sup>th</sup> String Notes: E, F & G

### 51

**52**

Exercise 52 is a four-measure piece in 4/4 time, marked *mf*. The notes and fret numbers are as follows:

Measure	Notes (Fret)
1	G <sub>2</sub> (1), A <sub>2</sub> (0), B <sub>2</sub> (3), C <sub>3</sub> (0)
2	G <sub>2</sub> (1), A <sub>2</sub> (0), B <sub>2</sub> (3), C <sub>3</sub> (0)
3	C <sub>3</sub> (3), B <sub>2</sub> (0), A <sub>2</sub> (3), G <sub>2</sub> (0)
4	F <sub>2</sub> (0), E <sub>2</sub> (3), D <sub>2</sub> (1)

**53**

Exercise 53 is a four-measure piece in 4/4 time, marked *mf*. The notes and fret numbers are as follows:

Measure	Notes (Fret)
1	G <sub>2</sub> (0), A <sub>2</sub> (1), B <sub>2</sub> (3), C <sub>3</sub> (3)
2	C <sub>3</sub> (0), B <sub>2</sub> (3), A <sub>2</sub> (0), G <sub>2</sub> (1)
3	G <sub>2</sub> (3), F <sub>2</sub> (1), E <sub>2</sub> (1), D <sub>2</sub> (0)
4	C <sub>3</sub> (1)

### 54 DOO-WOP

The musical score for "54 DOO-WOP" is presented in two systems. The first system consists of measures 1 through 4. Measure 1 is marked with a treble clef, a 3/4 time signature, and a *mf* dynamic marking. The notes in measure 1 are G4, A4, and B4. Measure 2 contains G4, A4, and B4. Measure 3 contains G4, A4, and B4. Measure 4 contains G4, A4, and B4. The guitar TAB staff for the first system shows fret numbers 3, 3, 3, 0, 0, and 0 across the six strings. The second system consists of measures 5 through 9. Measure 5 is marked with a **F** chord and contains G4, A4, and B4. Measure 6 contains G4, A4, and B4. Measure 7 is marked with a **G** chord and contains G4, A4, and B4. Measure 8 contains G4, A4, and B4. Measure 9 is marked with a **C** chord and contains G4, A4, and B4. The guitar TAB staff for the second system shows fret numbers 1, 1, 1, 3, 3, 0, 2, and 3 across the six strings.

# 55 GIVE MY REGARDS TO BROADWAY

1 **C** 2 **Fm** 3 **G7**

5 **Dm** 6 **G7** 7 **C** 8 **G7**

9 **C** 10 **Am** 11 **G** 12 **D7** 13 **G**

13 **Am** 14 **G7** 15 **C** 16

3 0 2 3 0 3 2 3 0 2 2 3 (3) 3 0 2 3 0 2 3 0 2 0 3 3 0 2 0 3 (3)

**C**

**Fm**

**G7**

**Dm**

**Am**

**G**

**D7**

**56 BASS ROCK**

[Capo 2]

**D**

1 2 3 4

mf

T  
A  
B

0 0 3 0 | 0 0 0 | 0 0 3 0 | (0)

**G** **D**

5 6 7 8

0 0 3 0 | 0 3 0 3 | 0 0 3 0 | (0)

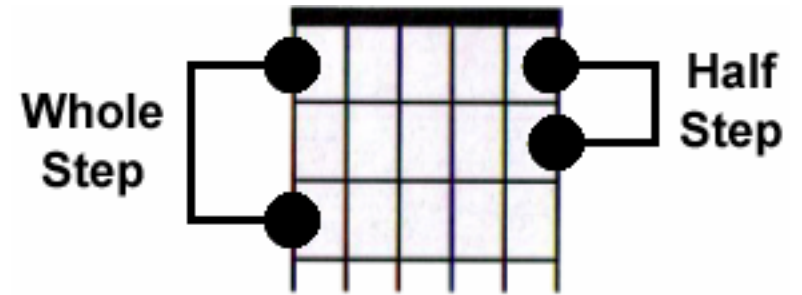
**A** **G** **D**

9 10 11 12

2 2 0 2 | 0 0 2 0 | 0 2 0 2 | (2)

## HALF and WHOLE STEPS

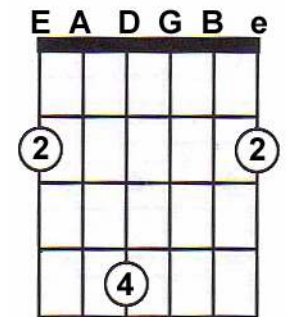
The distance between music tones is measured by half steps and whole steps. On your guitar the distance between one fret and the next fret is a half step. The distance from one fret to the third fret in either direction is called a whole step.



## F-SHARP (F#)

When a sharp (#) is placed in front of a note, the note is raised a half step and played one fret higher. A sharp placed before a note affects all notes on the same line of space that follow in that measure. Following are the three F#s that appear on the fret board to the right:

### 3 F#s



**57** Practice each of these 4 finger exercises to improve your playing.

The image shows a musical exercise for guitar. It consists of a staff with a treble clef and a 4/4 time signature, and a corresponding guitar tablature below it. The exercise is divided into four measures, each separated by a double bar line. The notes in the staff are as follows:

- Measure 1: G4 (quarter), A#4 (quarter), B4 (quarter), A4 (quarter)
- Measure 2: G4 (quarter), F#4 (quarter), E4 (quarter), D4 (quarter)
- Measure 3: D4 (quarter), E4 (quarter), F#4 (quarter), G4 (quarter)
- Measure 4: G3 (quarter), F#3 (quarter), E3 (quarter), D3 (quarter)

The guitar tablature below the staff shows the fret numbers for each note:

- Measure 1: 0, 2, 3, 2
- Measure 2: 0, 2, 4, 2
- Measure 3: 0, 4, 0, 2
- Measure 4: 0, 2, 3, 2

# 58 DANNY BOY (LONDONDERRY AIR)

1 **G** 2 3 4 **C**

*mf*

T  
A  
B

5 6 **G** 7 8 **D7**

(2)

9 10 **G** 11 12 **C**

(2)

13 14 **G** 15 **D7** 16 **G** 17

(2)

(0)



### 59 SPY RIFF

The musical score for "59 SPY RIFF" is presented in 4/4 time. It consists of two systems of music, each with a standard staff and a corresponding guitar tablature line. The riff is composed of 9 measures, alternating between E and G chords.

**Measure 1 (E):** Treble clef, 4/4 time signature. Notes: E2 (marked with a  $\text{tr}$ ), G2, A#2, E2. Tablature: 0 0 2 0.

**Measure 2 (G):** Notes: G2, F#2, G2, E2. Tablature: 3 0 0 3.

**Measure 3 (E):** Notes: E2, G2, A#2, E2. Tablature: 0 0 2 0.

**Measure 4 (G):** Notes: G2, A#2, E2. Tablature: 3 2.

**Measure 5 (E):** Notes: E2, G2, A#2, E2. Tablature: 0 0 2 0.

**Measure 6 (G):** Notes: G2, F#2, G2, E2. Tablature: 3 0 0 3.

**Measure 7 (E):** Notes: E2, G2, A#2, E2. Tablature: 0 0 2 0.

**Measure 8 (G):** Notes: G2, A#2, E2. Tablature: 3 2 1.

**Measure 9 (E):** Notes: E2. Tablature: 0.

# 60 SHENANDOAH

1 2 G 3 4

*mf*  
Oh Shen-an doah I long to see you,

T  
A  
B

0 0 0 0 (0) 2 4 1 0 3

---

5 6 C 7 8 G

A- way you roll- ing riv- er,

(3) 3 2 0 (0) 3 0 3 0 3

---

9 10 C 11 G 12 D7 G

Oh Shen-an- doah I long to see you.

(3) 3 0 0 0 (0) 3 0 0 2 0

13 14 15 16

A- way we're bound a- way

(0) 0 (0) 4 0 0 3

**Em** **G** **D7** **G**

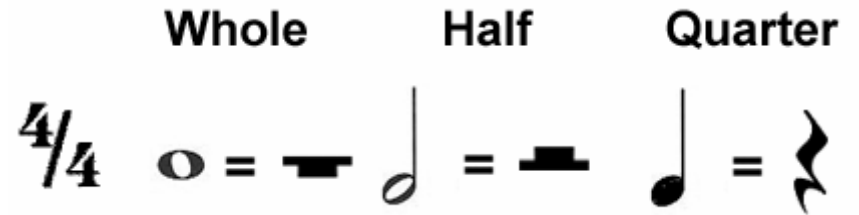
17 18 19 20

cross the wideMiss- ou- ri.

(3) 0 0 2 0 0 2 0 0

## RESTS:

Musical **rests** are moments of silence in music. Each type of note has a matching rest which has the same name and receives the same number of counts:



**A rest** often requires that you stop the sound of the guitar strings. This process is called **dampening** the strings. Use the edge of your right palm to lightly touch the strings. As you play exercises 61 & 62 that contain both notes and rests, count aloud using numbers for notes and say the word rest for each beat of silence.

**61**

$\text{mf}$   
 1 2 3 Rest    1 Rest 3 Rest    Rest 2 3 4    1-2 Rest Rest

T  
A  
B

The letter **R** is used in place of the word "Rest":

**62**

$\text{mf}$   
 1 2 R R    R 2 3 4    R R R R    1 R 3 4    1-2-3 R

T  
A  
B

### 63 DEEP BLUE

The musical score for "63 DEEP BLUE" is presented in 4/4 time. It consists of two systems of notation: a standard staff with a treble clef and a guitar tablature staff. The first system contains measures 1 through 4, and the second system contains measures 5 through 8. Each measure is marked with a measure number above the staff. The tablature staff uses numbers 0 and 1 to indicate fret positions on the strings. The first system shows a rhythmic pattern of quarter notes and rests, while the second system shows a sequence of eighth notes.

Measure	Staff 1 (Notes)	Staff 2 (TAB)
1	G4, B3, G4, G4	0 0
2	G4, B3, G4, G4	0 0
3	G4, B3, G4, G4	0 0
4	G4, B3, G4, G4	0 0
5	G4, A4, B4, C5	0 1 0 1
6	G4, A4, B4, C5	0 1 0 1
7	G4, A4, B4, C5	0 1 0 1
8	G4, A4, G4, G4	0 0

# 64 RED RIVER VALLEY

1 *mf* Come and sit by my side if you love me.

2 **G**

3

4 **C**

5 Do not hasten to bid me adieu.

6 **G**

7

8 **D7**

9 But remember the Red River Valley,

10 **G**

11 **G7**

12 **C**

13 and the cowboy who loved you so true.

14 **D7**

15

16

17

T  
A  
B

Detailed description of the musical score: The score is for the song 'Red River Valley'. It consists of four systems of music. Each system has a vocal line on a treble clef staff and a guitar tablature line below it. The time signature is 4/4. The key signature has one sharp (F#). The lyrics are: 'Come and sit by my side if you love me. Do not hasten to bid me adieu. But remember the Red River Valley, and the cowboy who loved you so true.' Chord markings are placed above the staff: G (measures 2, 6, 10), C (measures 4, 12), and D7 (measures 8, 14). Measure 14 also has a sharp sign above the second note. The tablature line is labeled 'T A B' on the left. Measure 17 ends with a double bar line and a circled '0' in parentheses.

### 65 TWANG

The exercise is written in 4/4 time with a treble clef. It consists of two systems of music, each with a standard staff and a guitar tablature staff below it. The tablature staff is labeled 'TAB' on the left. Measure numbers 1 through 9 are placed above the notes in the standard staff. The notes are quarter notes, with some beamed together. The tablature shows fret numbers: 0 for open strings, 2 for the second fret, and 3 for the third fret. A 'TWANG' symbol is placed above the notes in measures 1, 3, 5, 7, and 9. The first measure has a dynamic marking of 'mf'. The piece ends with a double bar line at the end of measure 9.

Measure	Standard Staff Notes	Tablature
1	Rest	0
2	G4, A4, B4, C#5, B4, A4	0 0 2 0
3	G4, TWANG, TWANG, TWANG	0 0
4	G4, A4, B4, C#5, B4, A4	(0) 0 3 0
5	G4, TWANG, TWANG, TWANG	0
6	G4, A4, B4, C#5, B4, A4	0 0 2 0
7	G4, TWANG, TWANG, TWANG	0 0
8	G4, A4, B4, C#5, B4, A4	0 (0) 0 0 2
9	G4, TWANG, TWANG, TWANG	0

# 66 ROCK 'N' REST

1

2

3

4

5

6

7

8